



# EXPANDING HORIZONS

Enter new markets with high-quality 1-piece paper lids



---

# PL 100

**1-Piece Paperboard Lid Forming Machine**

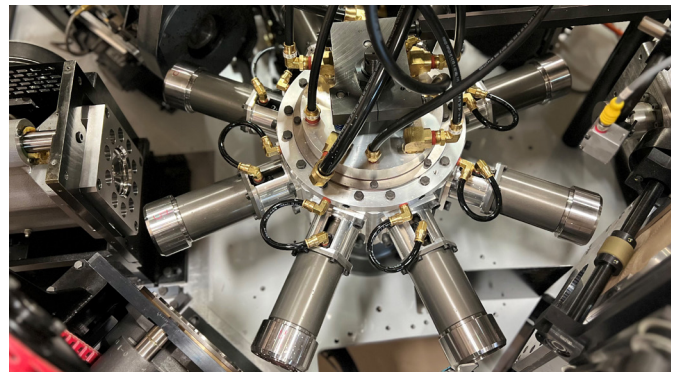
# EXPERIENCE INNOVATION AND GROW YOUR BUSINESS



The PL 100 is the next generation of innovation from Paper Machinery Corporation and provides a new opportunity for you to enlarge your product portfolio. Meeting the same exacting quality standards that you would expect from the global leader in paper forming machinery, it allows you to efficiently produce high-quality 1-piece paper lids—all while being backed by our industry-leading service and support.

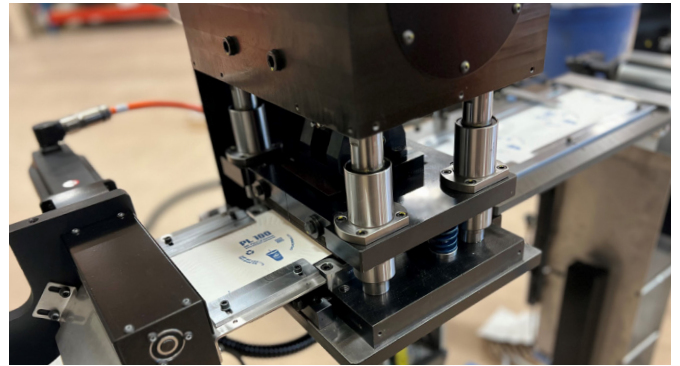
## POWERED BY INNOVATION

Producing lids at speeds up to 200 per minute, the **PL 100** is powered by individual Bosch® servo motors for each station, providing efficiency and flexibility during operations. Built on a compact 9 ft. x 6 ft. machine base with a single turret, this machine saves valuable floorspace without compromising efficiency. Additionally, its remote VPN connection for service and troubleshooting ensures your machine receives immediate attention when needed.



## CUSTOM EMBOSSING AND FINISHING

In addition to conventional embossing options found on container lids, the **PL 100** unlocks the ability to utilize printed graphics that can compliment promotional runs, campaigns and branding. Development is already underway for a variety of punched holes for drinking and the placement of straws for both hot and cold beverages.



## EXPAND YOUR PRODUCT PORTFOLIO

The **PL 100** creates high quality 1-piece paperboard lids that introduce new opportunities for your business. From cold drink beverages, to dry goods and snack foods, this machine allows for the creation of eco-friendly packaging lids for a variety of applications. This makes it an exciting addition to PMC's expanding product line of high-quality forming machines. You can be assured that lids from the **PL 100** will provide a secure fit to the trusted cups and containers formed on PMC machines.



# MACHINE SPECIFICATIONS

# UTILITY REQUIREMENTS

**SPEED:** 200 lids per minute

**ROUND LID DIAMETER:** 2.5 in. (63.5 mm) – 6.5 in. (165.1 mm)

**LID HEIGHT RANGE:** 0.39 in. (10 mm) – 0.55 in. (14 mm)

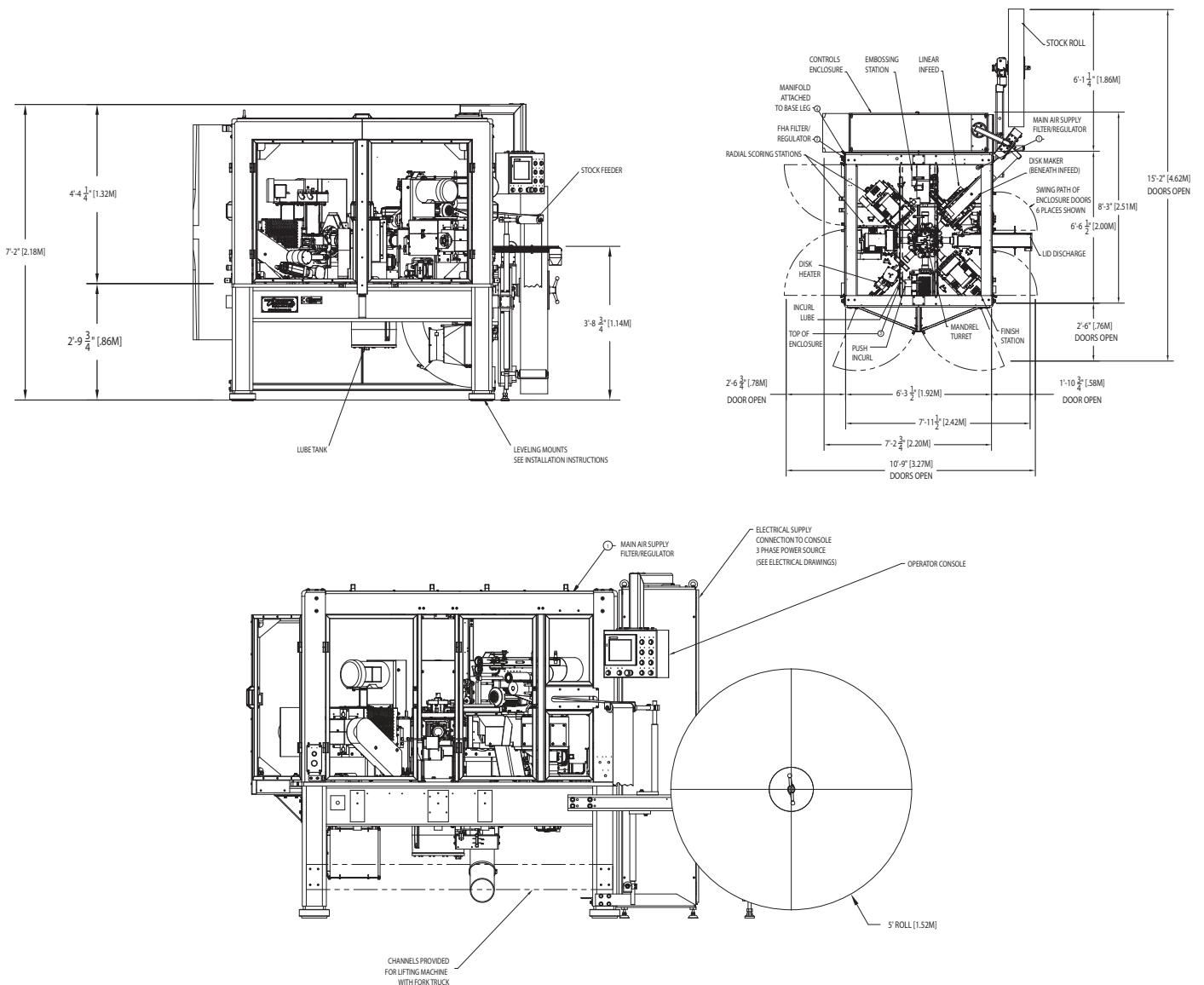
**DISK STOCK THICKNESS:** 0.014 in. – 0.025 in.

**ELECTRICAL:** 27.5 kVA @ 50 or 60 Hz

**WATER:** 0.5 gal/min @ 20 lb/inch<sup>2</sup>Hg or 1.9 liter/min @ 1.4 kg/cm<sup>2</sup>

**VACUUM:** 45 FT<sup>3</sup>/MIN @ 18 inch Hg

**COMPRESSED AIR:** 60 SCFM





**PAPER  
MACHINERY  
CORPORATION**

Contact Paper Machinery Corporation's dedicated sales representatives  
for more information or to schedule a demonstration.

[explore.papermc.com](https://www.explore.papermc.com)

+1 (414) 354-8050 | 8900 West Bradley Road | Milwaukee, WI 53224 USA